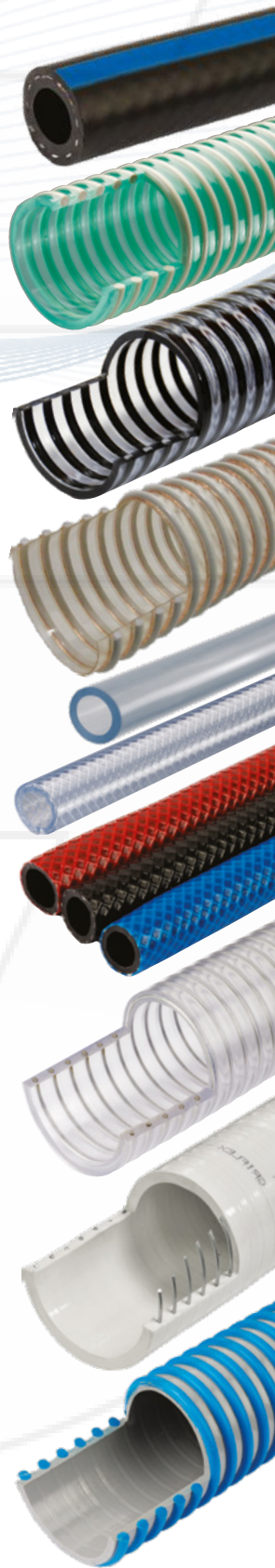


quotes@tipes.co.uk



hose & ducting solutions



Hose & Ducting - Selection Guide 2021



Tel: 01626 201092

What's New



ASDHXT
Agricultural Seed Drill Hose Extreme Elastic

- Non-toxic EN10-2011 approved materials
- Extremely Flexible, tough and durable
- Outstanding resistance to the effects of weather



LAHX
Premium Light Weight Air

- Kink and abrasion resistant ensuring long lasting use
- Outstanding resistance to the effects of weather
- Minimum frictional loss is achieved by the smooth bore



BPU
PU Braided

- Outstanding resistance to the effects of weather
- Minimum frictional loss is achieved by the smooth bore
- Excellent chemical resistance



SFXE
Springflex Super Elastic

- Improved bend radius and flexibility
- Exceptional kink and crush resistance
- High vacuum performance at elevated temperatures



CDXT
Extreme Elastic, Water Delivery

- Tough, extremely flexible and durable
- Outstanding resistance to the effects of weather
- Minimum frictional loss is achieved by the smooth bore



CUAS
Premium Medium Duty Anti-Static

- Stranded copper wire for static discharge
- Tough, flexible and extremely durable
- Outstanding resistance to the effects of weather



SDSXT
Seed Drill Smooth Extreme Elastic

- Non-toxic EN10-2011 approved materials
- Extremely Flexible, tough and durable
- Outstanding resistance to the effects of weather



50m
Now available with all Springflex™, Wireflex and PVC spiral products



Application Guide

		Suction & Delivery Hose																	
System		CD	CDXE	CDXT	CDLXE	CDFG	CDAS	ASDH	ASDHXE	ASDHXT	SDS	SDSXE	SDSXT	CUL	CU	CUXE	CUXES	CUXESZ	
Page No.		8	8	8	8	9	9	9	9	9	10	10	10	10	10	11	11	11	
Temp Range °C		Min	-10	-10	-10	-10	-10	-10	-10	-10	-10	-10	-10	-10	-10	-10	-10	-10	-40
		Max	+55	+55	+55	+55	+55	+55	+55	+55	+55	+55	+55	+55	+55	+55	+55	+55	+55
Size Range		Inches	Min	1/2"	1/2"	1/2"	1/2"	1/2"	1/2"	1/2"	1/2"	1/2"	1/2"	1"	1"	1"	1"	1"	
		Max	8"	4"	2"	2"	8"	8"	4"	4"	4"	4"	4"	4"	8"	10"	10"	10"	4"
		mm	Min	12.0	12.0	12.0	12.0	12.0	12.0	12.0	12.0	12.0	12.0	25.4	25.4	25.4	25.4	25.4	
		Max	203.0	102.0	51.6	51.6	203.0	203.0	102.0	102.0	102.0	102.0	102.0	254.0	254.0	254.0	254.0	102.0	
Agriculture		•	•	•	•	•	•	•	•	•	•	•	•	•	•	•	•	•	
Automotive																			
Construction		•	•		•	•	•							•	•	•	•	•	
Domestic																			
Leisure & Marine														•	•				
Industrial								•	•	•	•	•	•	•	•	•	•	•	
Marine		•			•	•	•												
Mining																			
Rail																			
Food Grade (EU2011)						•		•	•	•	•	•	•						
Fire Retardant																			
Anti Static							•												
Bend Radius mm (Based on 1")		144	102	90	114	114	114	100	90	80	110	102	90	100	113	113	113	84	
Flexibility Rating (1-5)		3	4	5	5	3	3	4	4	4	4	4	4	3	3	4	4	5	
Longevity & Abrasion Rating (1-5)		3	3	3	3	3	3	4	4	4	4	4	4	3	4	4	4	4	
UV Resistance Rating (1-5)		2	3	5	3	3	2	5	5	5	5	5	5	2	2	2	3	3	

quotes@tipes-co.uk

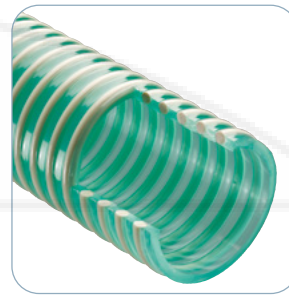
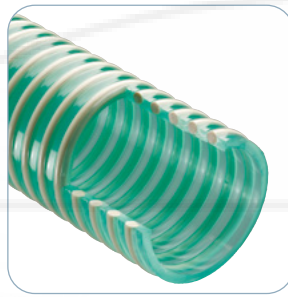
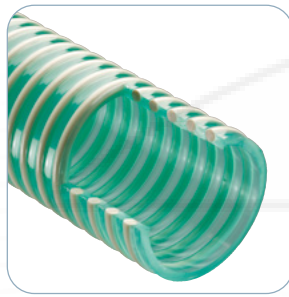
Suction & Delivery Hose															Wire Reinforced Hose										
CUXS	CUAS	CDOR	CUOR	CUORAS	CSOR	CS	CSAS	CSF	CSS	MTH	SPH	CSH	AQH	AQHD	WF	WFUV	WFSH	SF	SFSH	SFOR	SFPUL	WFB	SFBFG	SFBOR	
11	11	12	12	12	12	12	13	13	13	13	13	14	14	14	14	14	15	15	15	15	15	15	16	16	16
-10	-10	-10	-10	-10	-10	-10	-10	-10	-10	-10	-10	-10	-10	-10	-10	-10	-10	-10	-10	-10	-10	-10	-10	-10	-10
+55	+55	+55	+55	+55	+55	+55	+55	+55	+55	+55	+55	+55	+55	+55	+55	+55	+55	+55	+55	+55	+55	+55	+55	+55	+55
1"	1"	1/2"	1"	1"	1"	1"	1"	4"	4"	2"	Metric	5/8"	3/8"	3/8"	3/8"	3/8"	3/8"	3/8"	3/8"	3/8"	3/4"	3/8"	3/8"	1/2"	
10"	10"	6"	10"	10"	10"	10"	10"	10"	10"	2 1/2"	Metric	2"	3"	3"	6"	6"	6"	6"	5"	6"	4"	4"	4"	2"	
25.4	25.4	12.0	25.4	25.4	25.4	25.4	25.4	102.0	102.0	12.0	14.0	16.0	10.0	10.0	10.0	10.0	10.0	10.0	10.0	10.0	19.0	10.0	10.0	13.0	
254.0	254.0	152.0	254.0	254.0	254.0	254.0	254.0	254.0	254.0	102.0	51.0	51.6	76.0	76.0	152.0	152.0	152.0	152.0	127.0	152.0	102.0	102.0	102.0	51.0	
•	•	•	•	•	•	•	•	•	•	•								•	•	•	•	•	•	•	
•		•	•	•	•															•				•	
•	•	•	•	•	•	•	•				•	•			•	•	•	•	•	•	•	•	•	•	
											•	•													
	•																								
•	•		•	•	•	•	•	•	•											•	•	•	•	•	
		•	•	•																					
			•		•	•									•	•	•	•	•	•	•	•	•	•	
																		•							
	•			•																					
100	110	114	113	113	160	160	160	-	-	-	-	102	26	31	50	50	50	50	50	50	50	60	60	60	
4	3	3	3	3	2	2	2	2	2	4	2	4	5	4	3	3	3	3	3	3	3	2	2	2	
4	4	3	4	4	5	5	5	5	5	3	3	3	2	3	3	3	3	4	4	4	5	5	5	5	
3	3	3	3	3	3	4	4	4	4	3	3	3	3	3	3	5	3	3	4	4	4	3	3	4	

quotes@tipes-co.uk

Ducting Hose									Tubing and Braided Hose																	
CPU	CPUAS	CPUFR	CV	CVL	CVLFR	CVLFRAS	VL	VHW	MH	BCH	MHPU	XL	HN	HNHIVIS	BPU	LAH	LAHX	GPA	CMP	ASH	APWH	PWH	FLU	DDH	BDDH	RFH
16	16	17	17	17	17	17	18	18	18	18	18	19	19	19	19	19	20	20	20	20	20	21	21	21	21	21
-25	-25	-25	-10	-10	-10	-10	-10	-10	-10	-10	-25	-10	-10	-10	-25	-10	-10	-10	-10	-10	-10	-10	-10	-10	-10	-10
+85	+85	+85	+55	+55	+55	+55	+55	+55	+55	+55	+85	+60	+60	+60	+85	+60	+55	+60	+60	+60	+55	+60	+55	+55	+55	+60
1"	1"	1"	Metric	Metric	Metric	Metric	1"	1"	1/8"	1/2"	1/5"	1/4"	3/16"	3/16"	1/5"	1/4"	1/5"	3/16"	1/4"	1/4"	1/2"	1/2"	1/2"	3/4"	3/4"	3/4"
10"	10"	10"	10"	10"	10"	10"	4.5"	4.5"	2"	1"	3/4"	2"	2"	2"	3/4"	3/4"	3/4"	1"	1"	1"	1"	1"	1"	1"	1"	1"
25.4	25.4	25.4	20.0	20.0	20.0	20.0	25.0	25.0	3.0	12.0	5.0	6.3	5.0	5.0	5.0	6.3	5.0	5.0	6.0	6.3	12.5	12.5	12.5	19.0	19.0	19.0
254.0	254.0	254.0	254.0	254.0	254.0	254.0	115.0	115.0	50.0	25.0	19.0	50.0	50.0	50.0	19.0	19.0	19.0	25.0	25.0	25.0	25.0	25.0	25.0	25.0	25.0	25.0
•	•	•	•	•	•	•			•	•	•	•	•	•	•	•	•	•	•	•	•	•	•	•	•	•
	•	•	•	•	•	•	•	•			•	•	•	•	•	•	•	•	•					•	•	•
•	•	•	•	•	•	•				•		•	•	•		•	•	•	•	•	•		•			•
							•	•	•	•		•	•	•		•	•		•	•	•	•	•			
•	•	•	•	•	•	•		•				•	•	•				•	•	•	•		•	•	•	•
							•	•	•			•	•	•		•	•		•	•	•	•	•	•	•	•
	•								•			•	•													
		•																								
	•																									
25	25	25	20	25	25	30	13	16	-	200	-	163	162.5	163	-	-	-	241	180	210	125	125	133	170	170	170
5	5	5	5	5	5	5	5	5	4	3	4	4	4	4	4	4	4	4	4	4	4	4	3	4	4	4
4	4	4	3	2	2	2	2	2	2	2	5	2	3	3	5	2	2	3	3	3	2	3	3	3	3	3
4	4	4	3	3	3	3	2	3	2	3	3	2	2	3	3	2	3	3	2	3	3	3	3	3	3	3

quotes@tipes-co.uk

Hose & Ducting - Selection Guide



NEW

Suction and Delivery Hose

CD Water Delivery

- Key features**
- Tough, super flexible and durable
 - Outstanding resistance to the effects of weather
 - Minimum frictional loss is achieved by the smooth bore
 - Excellent chemical resistance

Applications
Water, slurries and powders. This product is particularly popular in the agricultural, horticultural, marine and construction industries.

Construction
Crush resistant anti-shock PVC spiral helix encapsulated in a flexible PVC cover, with a smooth inside wall.

Colour
Standard - Transparent Green, Transparent Yellow, Black.

Size Range
½" to 8"
20mm to 80mm

Standard Length
Up to 6", 30 metres supplied in a coil. Up to 80mm, 50 metres coils also available. Over 6", 10 metres supplied in a straight cured lengths.

Temperature Range
-10°C to +55°C

PRODUCT REF.	INTERNAL DIA inch	INTERNAL DIA mm	WORKING PRESSURE BAR	MIN BENDING RADIUS mm	WEIGHT Kg/Mtr
CD05	½"	12.0	10	57	0.16
CD06	¾"	16.0	9.5	72	0.26
CD07	¾"	19.0	9	86	0.28
CDM20	Metric	20.0	8	75	0.28
CDM25	Metric	25.0	8	120	0.33
CD10	1"	25.4	8	114	0.33
CDM28	Metric	28.0	7	130	0.38
CDM30	Metric	30.0	7	140	0.42
CD12	1¼"	32.0	7	143	0.46
CDM35	Metric	35.0	7	160	0.50
CD15	1½"	38.0	6.5	171	0.55
CDM40	Metric	40.0	6.5	180	0.61
CDM45	Metric	45.0	6.5	200	0.67
CD20	2"	51.6	6	230	0.81
CDM60	Metric	60.0	5	270	0.97
CD25	2½"	63.5	5	284	1.04
CD30	3"	76.0	4	342	1.38
CDM80	Metric	80.0	4	360	1.56
CD35	3½"	90.0	4	430	1.80
CD40	4"	102.0	4	459	2.16
CD50	5"	127.0	3.7	680	3.20
CDM140	Metric	140.0	3	730	3.77
CD60	6"	152.0	3	810	4.22
CD80	8"	203.0	1.5	900	8.50

CDXE Water Delivery Super Elastic

- Key features**
- Tough, super flexible and durable
 - Outstanding resistance to the effects of weather
 - Minimum frictional loss is achieved by the smooth bore
 - Excellent chemical resistance

Applications
Water, slurries and powders. This product is particularly popular in the agricultural, horticultural, marine and construction industries.

Construction
Crush resistant anti-shock PVC spiral helix encapsulated in a flexible super elastic PVC cover, with a smooth inside wall.

Colour
Standard - Transparent Green, Transparent Yellow, Black.

Size Range
½" to 4"
20mm to 80mm

Standard Length
30 metres supplied in a coil. Up to 80mm, 50 metres coils also available.

Temperature Range
-10°C to +55°C

PRODUCT REF.	INTERNAL DIA inch	INTERNAL DIA mm	WORKING PRESSURE BAR	MIN BENDING RADIUS mm	WEIGHT Kg/Mtr
CDXE05	½"	12.0	10	50	0.17
CDXE06	¾"	16.0	9.5	64	0.20
CDXE07	¾"	19.0	9	76	0.28
CDXEM20	Metric	20.0	8	75	0.30
CDXEM25	Metric	25.0	8	120	0.37
CDXE10	1"	25.4	8	102	0.39
CDM28	Metric	28.0	7	130	0.42
CDXEM30	Metric	30.0	7	140	0.45
CDXE12	1¼"	32.0	7	127	0.47
CDXEM35	Metric	35.0	7	160	0.52
CDXE15	1½"	38.0	6.5	152	0.56
CDXEM40	Metric	40.0	6.5	180	0.61
CDXEM45	Metric	45.0	6.5	200	0.70
CDXE20	2"	51.6	6	204	0.82
CDXEM60	Metric	60.0	5	270	0.98
CDXE25	2½"	63.5	5	254	1.07
CDXE30	3"	76.0	4	304	1.36
CDXEM80	Metric	80.0	4	360	1.48
CDXE35	3½"	89.0	4	356	1.77
CDXE40	4"	102.0	4	406	2.13

CDXT Extreme Elastic, Water Delivery

- Key features**
- Tough, extremely flexible and durable
 - Outstanding resistance to the effects of weather
 - Minimum frictional loss is achieved by the smooth bore
 - Excellent chemical resistance
 - Smooth exterior provides easy routing & greater strength

Applications
Water, slurries and powders. This product is particularly popular in the agricultural, horticultural, marine and construction industries.

Construction
Crush resistant anti-shock PVC spiral helix encapsulated in a flexible PVC cover, with a smooth inside wall.

Colour
Standard - Transparent Green.

Size Range
½" to 4"
20mm to 80mm

Standard Length
30m coils. 50m coils also available up to 80mm.

Temperature Range
-10°C to +55°C

PRODUCT REF.	INTERNAL DIA inch	INTERNAL DIA mm	WORKING PRESSURE BAR	MIN BENDING RADIUS mm	WEIGHT Kg/Mtr
CDXT05	½"	12.0	10	50	0.16
CDXT06	¾"	16.0	9.5	60	0.20
CDXT07	¾"	19.0	9	70	0.27
CDXTM20	Metric	20.0	8	70	0.28
CDXTM25	Metric	25.0	8	110	0.32
CDXT10	1"	25.4	8	90	0.38
CDXTM28	Metric	28.0	7	120	0.41
CDXTM30	Metric	30.0	7	130	0.44
CDXT12	1¼"	32.0	7	110	0.46
CDXTM35	Metric	35.0	7	140	0.50
CDXT15	1½"	38.0	6.5	140	0.56
CDXTM40	Metric	40.0	6.5	160	0.61
CDXTM45	Metric	45.0	6.5	180	0.67
CDXT20	2"	51.6	6	180	0.81
CDXTM60	Metric	60.0	5	240	0.96
CDXT25	2½"	63.5	5	230	1.07
CDXT30	3"	76.0	4	270	1.36
CDXTM80	Metric	80.0	4	320	1.48
CDXT35	3½"	89.0	4	320	1.75
CDXT40	4"	102.0	4	370	2.11

CDLXE Super Elastic Lightweight

- Key features**
- Tough, super flexible and durable
 - Outstanding resistance to the effects of weather
 - Minimum frictional loss is achieved by the smooth bore
 - Excellent chemical resistance

Applications
Water, slurries and powders. This product is particularly popular in the agricultural, horticultural, marine and construction industries.

Construction
Crush resistant anti-shock PVC spiral helix encapsulated in a flexible super elastic PVC cover, with a smooth inside wall.

Colour
Standard - Transparent Green, Transparent Yellow, Black.

Size Range
½" to 4"
20mm to 45mm

Standard Length
30/50 metres supplied in a coil.

Temperature Range
-10°C to +55°C

PRODUCT REF.	INTERNAL DIA inch	INTERNAL DIA mm	WORKING PRESSURE BAR	MIN BENDING RADIUS mm	WEIGHT Kg/Mtr
CDLXE05	½"	12.0	3.2	57	0.11
CDLXE06	¾"	16.0	3.2	72	0.17
CDLXE07	¾"	19.0	3	86	0.19
CDLXM20	Metric	20.0	2.9	110	0.20
CDLXE10	1"	25.4	2.8	114	0.27
CDLXM28	Metric	28.0	0.27	125	0.30
CDLXM30	Metric	30.0	2.7	136	0.33
CDLXE12	1¼"	32.0	2.7	143	0.35
CDLXM35	Metric	35.0	2.5	160	0.42
CDLXE15	1½"	38.0	2.3	171	0.46
CDLXM40	Metric	40.0	2.2	185	0.48
CDLXM45	Metric	45.0	2.1	213	0.64
CDLXE20	2"	51.6	2	230	0.74

Suction and Delivery Hose | pages 8-14

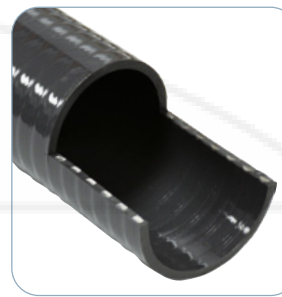
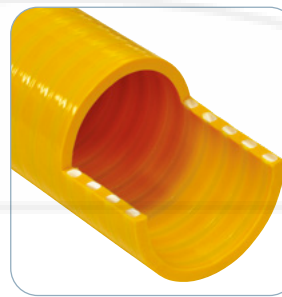
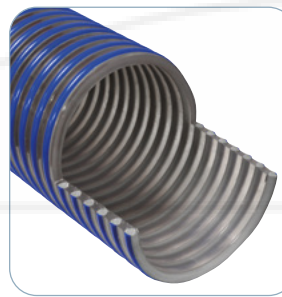
Wire Reinforced Hose | pages 14-16

Ducting Hose | pages 16-18

Tubing and Braided Hose | pages 18-21



Tel: 01626 201092



Suction and Delivery Hose

CSAS Heavy Duty Anti Static

Key features

- Stranded copper wire for static discharge
- Tough, flexible and extremely durable for severe working conditions
- Outstanding resistance to the effects of weather
- Minimum frictional loss is achieved by the smooth bore
- Excellent chemical resistance

Applications

Water, sewage, slurries and powders. Ideal for general industrial applications.

Construction

Crush resistant anti-shock PVC spiral helix encapsulated in a grey flexible PVC cover, with a smooth inside wall.

Colour

Standard - Grey.
Option - Dark Green.

Size Range

1" to 10"
20mm to 80mm

Standard Length

Up to 6", 30 metres supplied in a coil.
Up to 80mm, 50 metres coils also available.
Over 6", 10 metres supplied in a straight cured lengths.

Temperature Range

-10°C to +55°C

PRODUCT REF	INTERNAL DIA inch	INTERNAL DIA mm	WORKING PRESSURE BAR	MIN BENDING RADIUS mm	WEIGHT Kg/Mtr
CSAS10	1"	25.4	13.3	160	0.53
CSASM28	Metric	28	11.5	180	0.61
CSASM30	Metric	30	10.1	190	0.65
CSAS12	1 1/2"	32	10.0	200	0.67
CSASM35	Metric	35	8.8	220	0.77
CSAS15	1 1/2"	38	8.7	230	0.89
CSASM40	Metric	40	7.9	260	0.96
CSASM45	Metric	45	7.5	280	1.15
CSAS20	2"	51.6	7.3	300	1.28
CSASM60	Metric	60	5.8	380	1.45
CSAS25	2 1/2"	63.5	6.0	370	1.58
CSAS30	3"	76	5.7	450	1.93
CSASM80	Metric	80	4.8	530	2.2
CSAS35	3 1/2"	90	5.0	550	2.23
CSAS40	4"	102	4.3	630	3.58
CSAS50	5"	127	4.0	850	4.76
CSASM140	Metric	140	3.7	1000	5.97
CSAS60	6"	152	3.7	1100	6.72
CSAS80	8"	204	3.3	2030	10.14
CSAS100	10"	254	3.0	2540	15

CSF Heavy Duty Fish Hose

Key features

- Tough, flexible and extremely durable for severe working conditions
- Outstanding resistance to the effects of weather
- Minimum frictional loss is achieved by the smooth bore
- Excellent chemical resistance

Applications

Designed specifically for the fish farming industry. Also suitable for water, sewage, slurries, general industry and powders.

Construction

Crush resistant anti-shock PVC spiral helix encapsulated in a clear flexible PVC cover, with a smooth inside wall.

Colour

Standard - Clear.

Size Range

4" to 10"

Standard Length

Up to 6", 30 metres supplied in a coil.
Over 6", 10 metres supplied in a straight cured lengths.

Temperature Range

-10°C to +55°C

PRODUCT REF	INTERNAL DIA inch	INTERNAL DIA mm	WORKING PRESSURE BAR	MIN BENDING RADIUS mm	WEIGHT Kg/Mtr
CSF40	4"	102	4.3	630	3.58
CSF50	5"	127	4.0	850	4.76
CSF60	6"	152	3.7	1100	6.72
CSF80	8"	204	3.3	2030	10.14
CSF100	10"	254	3.0	2540	15

CSS Heavy Duty Scuff Strip

Key features

- Excellent abrasion resistance from external scuff strip
- Tough, flexible and extremely durable for severe working conditions
- Outstanding resistance to the effects of weather
- Minimum frictional loss is achieved by the smooth bore
- Excellent chemical resistance

Applications

Designed specifically for the fish farming industry. Also suitable for water, sewage, slurries, general industry and powders.

Construction

Crush resistant anti-shock PVC spiral helix encapsulated in a clear flexible PVC cover, with a smooth inside wall and an external Blue scuff strip.

Colour

Standard - Clear with Blue scuff strip.

Size Range

4" to 10"

Standard Length

Up to 6", 30 metres supplied in a coil.
Over 6", 10 metres supplied in a straight cured lengths.

Temperature Range

-10°C to +55°C

PRODUCT REF	INTERNAL DIA inch	INTERNAL DIA mm	WORKING PRESSURE BAR	MIN BENDING RADIUS mm	WEIGHT Kg/Mtr
CSS40	4"	102	4.3	630	3.95
CSS50	5"	127	4.0	850	5.25
CSS60	6"	152	3.7	1100	7.45
CSS80	8"	204	3.3	2030	11.75
CSS100	10"	254	3.0	2540	16.6

MTH Milk Tanker Hose

Key features

- Tough, flexible and extremely durable
- Outstanding resistance to the effects of weather
- Minimum frictional loss is achieved by the smooth bore
- Excellent chemical resistance

Applications

Suitable for conveyance of dairy products and food stuffs in liquid and solid form. Approved for use with dairy products.

Construction

Rigid crush resistant anti-shock PVC spiral helix encapsulated in a Yellow or Blue flexible PVC cover, with a smooth inside wall.

Colour

Standard - Yellow or Blue.

Size Range

2" and 2 1/2"
other sizes available on request

Standard Length

30/50 metres supplied in a coil.

Temperature Range

-10°C to +55°C

PRODUCT REF	INTERNAL DIA inch	INTERNAL DIA mm	WORKING PRESSURE BAR	MIN BENDING RADIUS mm	WEIGHT Kg/Mtr
MTH20	2"	51.6	5.5	230	1.36
MTH25	2 1/2"	63.5	4.5	330	1.91

SPH Swimming pool Hose

Key features

- Smooth outer for easy cleaning
- Tough, flexible and extremely durable
- Outstanding resistance to the effects of weather
- Minimum frictional loss is achieved by the smooth bore
- Excellent chemical resistance

Applications

Spa bath, swimming pools as an alternative to rigid hoses.

Construction

Manufactured from a rigid crush resistant anti-shock PVC spiral helix encapsulated in a Grey flexible PVC cover. Smooth internal bore with smooth outer surface.

Colour

Standard - Grey.
Other colours are available subject to minimum order quantity.

Size Range

4" to 6"
14mm to 51mm

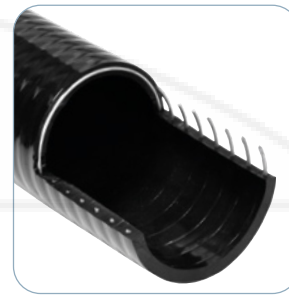
Standard Length

30 metres supplied in a coil.
Up to 80mm, 50 metres coils also available.

Temperature Range

-10°C to +55°C

PRODUCT REF	INTERNAL DIA inch	INTERNAL DIA mm	WORKING PRESSURE BAR	MIN BENDING RADIUS mm	WEIGHT Kg/Mtr
SPHM14/20	Metric	14.0	7	60	0.21
SPHM16/21.5	Metric	16.0	7	65	0.21
SPHM20/25	Metric	20.0	7	80	0.25
SPHM20/25.5	Metric	20.0	7	80	0.25
SPHM25/32	Metric	25.0	7	100	0.40
SPHM25/33	Metric	25.0	7	100	0.48
SPHM25/33.9	Metric	25.0	7	100	0.50
SPHM32/40	Metric	32.0	7	128	0.60
SPHM35/42.3	Metric	35.0	6	140	0.55
SPHM40/48	Metric	40.0	6	160	0.72
SPHM40/48.25	Metric	40.0	6	160	0.73
SPHM40/48.5	Metric	40.0	6	160	0.70
SPHM40/48.9	Metric	40.0	6	160	0.79
SPHM40/50.3	Metric	40.0	6	160	0.93
SPHM51/63	Metric	51.0	5	210	1.38



Suction and Delivery Hose

Wire Reinforced Hose

CSH Sanitation

- Description**
- Smooth outer for easy cleaning
 - Odour resistant compound for sanitation uses
 - Tough, super flexible and durable
 - Outstanding resistance to the effects of weather
 - Minimum frictional loss is achieved by the smooth bore
 - Excellent chemical resistance.

Applications
Transportation of liquids & slurry within the marina, boat & caravan market places. This hose is resistant to most cleaning chemicals and detergents.

Construction
Rigid crush resistant anti-shock PVC spiral helix encapsulated in a white permeation resistant flexible PVC cover, with a smooth inside wall.

Colour
Standard - White.

Size Range
¾" to 2"

Standard Length
30/50 metres supplied in a coil.

Temperature Range
-10°C to +55°C

PRODUCT REF.	INTERNAL DIA inch	INTERNAL DIA mm	WORKING PRESSURE BAR	MIN BENDING RADIUS mm	WEIGHT Kg/Mtr
CSH06	¾"	16.0	9.0	70	0.22
CSH07	¾"	19.0	9.0	76	0.28
CSHM20	Metric	20.0	8.0	100	0.28
CSH10	1"	25.4	8.0	102	0.39
CSHM28	Metric	28.0	7.0	120	0.45
CSH12	1¼"	32.0	7.0	127	0.47
CSH15	1½"	38.0	6.5	152	0.56
CSH20	2"	51.6	6.0	204	0.82

AQH Lightweight Ducting & Aquatic

- Key features**
- Retains cross section even when at minimum bend radius
 - Tough, super flexible and durable
 - Outstanding resistance to the effects of weather
 - Minimum frictional loss is achieved by the smooth bore
 - Excellent chemical resistance

Applications
Garden ponds, aquatic installations, caravans and ducting.

Construction
Manufactured from a crush resistant anti-shock PVC Spiral helix encapsulated in a black flexible PVC cover, with a smooth inside wall.

Colour
Standard - Black.

Size Range
¾" to 3"
20mm to 60mm

Standard Length
30/50 metres supplied in a coil.

Temperature Range
-10°C to +55°C

PRODUCT REF.	INTERNAL DIA inch	INTERNAL DIA mm	WORKING PRESSURE BAR	MIN BENDING RADIUS mm	WEIGHT Kg/Mtr
AQH04	¾"	10	2.0	10	0.07
AQH05	½"	12	2.0	14	0.08
AQH06	¾"	16	2.0	18	0.11
AQH07	¾"	19	2.0	21	0.15
AQH20	Metric	20	2.0	24	0.125
AQH10	1"	25.4	2.0	26	0.17
AQH28	Metric	28	2.0	28	0.21
AQH30	Metric	30	2.0	30	0.23
AQH12	1¼"	32	2.0	38	0.25
AQH35	Metric	35	2.0	35	0.28
AQH15	1½"	38	2.0	42	0.32
AQH40	Metric	40	1.0	40	0.33
AQH45	Metric	45	1.0	45	0.38
AQH20	2"	51.6	1.0	54	0.43
AQH60	Metric	60	1.0	66	0.56
AQH25	2 ½"	63	1.0	74	0.69
AQH30	3"	76	1.0	88	1.06

AQHD Aquatic & Ducting Deluxe

- Key features**
- Very high working pressures
 - Very good for vacuum
 - Two layers of food quality PVC
 - Exceptional kink and crush resistance from high tensile steel spiral
 - Tough, very flexible and extremely durable
 - Outstanding resistance to the effects of weather
 - Minimum frictional loss is achieved by the smooth bore
 - Excellent chemical resistance

Applications
Food stuffs and spirits up to 28% aromatic concentration.

Construction
High tensile carbon steel wire & high tensile polyester fibres encapsulated in two layers of PVC with a smooth inside wall.

Colour
Clear with a Black stripe. Other colours are available subject to minimum order quantity.

Size Range
¾" to 2", 2 ½" to 4" late 2019
35 & 45mm, 60 & 80mm late 2019

Standard Length
Up to 4" 30 metres supplied in a coil. Up to 80mm, 50 metre coils also available. Other lengths available on request.

Temperature Range
-10°C to +55°C

PRODUCT REF.	INTERNAL DIA inch	INTERNAL DIA mm	WORKING PRESSURE BAR	MIN BENDING RADIUS mm	WEIGHT Kg/Mtr
AQH04	¾"	10.0	2.0	10	0.10
AQH05	½"	12.0	2.0	16	0.15
AQH06	¾"	16.0	2.0	20	0.20
AQH07	¾"	19.0	2.0	24	0.25
AQH20	Metric	20.0	2.0	28	0.25
AQH10	1"	25.0	2.0	31	0.30
AQH28	Metric	28.0	2.0	38	0.30
AQH30	Metric	30.0	2.0	30	0.30
AQH12	1¼"	32.0	2.0	40	0.40
AQH35	Metric	35.0	2.0	35	0.55
AQH15	1½"	38.0	2.0	48	0.55
AQH40	Metric	40.0	1.0	40	0.70
AQH45	Metric	45.0	1.0	45	0.75
AQH20	2"	51.0	1.0	64	0.80
AQH60	Metric	60.0	1.0	110	1.00
AQH25	2 ½"	63.0	1.0	130	1.30
AQH30	3"	76.0	1.0	150	1.45

WF Wireflex

- Key features**
- Very high working pressures
 - Very good for vacuum
 - Exceptional kink and crush resistance from high tensile steel spiral
 - Tough, very flexible and extremely durable
 - Outstanding resistance to the effects of weather
 - Minimum frictional loss is achieved by the smooth bore
 - Excellent chemical resistance

Applications
Water, slurries, granules, foodstuffs and dilute chemicals. Wireflex is ideally suited to applications in the agricultural, food processing, plastics handling, marine & construction industries.

Construction
High tensile carbon steel wire encapsulated in transparent flexible PVC.

Colour
Clear. Other colours are available subject to minimum order quantity.

Size Range
¾" to 6"
35mm to 80mm

Standard Length
Up to 5" 30 metres supplied in a coil. Up to 80mm, 50 metre coils also available. 6" 20 metres supplied in a coil. Other lengths available on request.

Temperature Range
-10°C to +55°C

PRODUCT REF.	INTERNAL DIA inch	INTERNAL DIA mm	WORKING PRESSURE BAR	MIN BENDING RADIUS mm	WEIGHT Kg/Mtr
WF04	¾"	10	10.0	25	0.18
WF05	½"	13	10.0	26	0.21
WF06	¾"	16	9.0	32	0.25
WF07	¾"	19	7.5	45	0.33
WF10	1"	25	7.0	50	0.52
WF12	1¼"	32	7.0	80	0.66
WFM35	Metric	35	7.0	91	0.75
WF15	1½"	38	7.0	95	0.8
WFM45	Metric	45	7.0	110	1.15
WF20	2"	51	6.0	128	1.3
WFM60	Metric	60	5.0	150	1.75
WF25	2½"	63	4.5	158	1.8
WF30	3"	76	4.0	190	2.3
WFM80	Metric	80	3.0	320	2.5
WF35	3½"	90	3.0	360	2.9
WF40	4"	102	2.5	408	3.7
WF50	5"	127	2.0	508	4.7
WF60	6"	152	1.5	608	6.9

WFUV Wireflex Extra UV Resistance

- Key features**
- Exceptional UV resistance due to black outer
 - Very high working pressures
 - Very good for vacuum
 - Exceptional kink and crush resistance from high tensile steel spiral
 - Tough, very flexible and extremely durable
 - Outstanding resistance to the effects of weather
 - Minimum frictional loss is achieved by the smooth bore
 - Excellent chemical resistance

Applications
Water, slurries, granules, foodstuffs and dilute chemicals. Wireflex is ideally suited to applications in the agricultural, food processing, plastics handling, marine & construction industries.

Construction
High tensile carbon steel wire encapsulated in transparent flexible PVC.

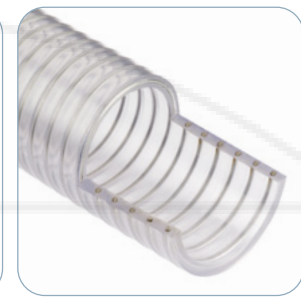
Colour
Black. Other colours are available subject to minimum order quantity.

Size Range
¾" to 6"
35mm to 80mm

Standard Length
Up to 5" 30 metres supplied in a coil. Up to 80mm, 50 metre coils also available. 6" 20 metres supplied in a coil. Other lengths available on request.

Temperature Range
-10°C to +55°C

PRODUCT REF.	INTERNAL DIA inch	INTERNAL DIA mm	WORKING PRESSURE BAR	MIN BENDING RADIUS mm	WEIGHT Kg/Mtr
WFUV04	¾"	10	10.0	25	0.18
WFUV05	½"	13	10.0	26	0.21
WFUV06	¾"	16	9.0	32	0.25
WFUV07	¾"	19	7.5	45	0.33
WFUV10	1"	25	7.0	50	0.52
WFUV12	1¼"	32	7.0	80	0.66
WFM35	Metric	35	7.0	91	0.75
WFUV15	1½"	38	7.0	95	0.8
WFM45	Metric	45	7.0	110	1.15
WFUV20	2"	51	6.0	128	1.3
WFM60	Metric	60	5.0	150	1.75
WFUV25	2½"	63	4.5	158	1.8
WFUV30	3"	76	4.0	190	2.3
WFM80	Metric	80	3.0	320	2.5
WFUV35	3½"	90	3.0	360	2.9
WFUV40	4"	102	2.5	408	3.7
WFUV50	5"	127	2.0	508	4.7
WFUV60	6"	152	1.5	608	6.9



Wire Reinforced Hose

WFSH Wireflex SF Springflex™ Sanitation

Key features

- Smooth outer for easy cleaning
- Odour resistant compound for sanitation uses
- Very high working pressures
- Very good for vacuum
- Exceptional kink and crush resistance from high tensile steel spiral
- Tough, very flexible and extremely durable
- Outstanding resistance to the effects of weather
- Minimum frictional loss is achieved by the smooth bore
- Excellent chemical resistance

Applications

Transportation of liquids & slurry within the marina, boat & caravan market places. This hose is resistant to most cleaning chemicals and detergents.

Construction

High tensile carbon steel wire encapsulated in white permeation resistant flexible PVC.

Colour
White.

Size Range
¾" to 4"
35mm to 80mm

Standard Length
30/50 metres supplied in a coil.

Temperature Range
-10°C to +55°C

PRODUCT REF.	INTERNAL DIA inch	INTERNAL DIA mm	WORKING PRESSURE BAR	MIN BENDING RADIUS mm	WEIGHT kg/Mtr
WFSH04	¾"	10	10.0	25	0.18
WFSH05	½"	13	10.0	26	0.21
WFSH06	¾"	16	9.0	32	0.25
WFSH07	¾"	19	7.5	45	0.33
WFSH10	1"	25	7.0	50	0.52
WFSH12	1¼"	32	7.0	80	0.66
WFSHM35	Metric	35	7.0	91	0.75
WFSH15	1½"	38	7.0	95	0.8
WFSHM45	Metric	45	7.0	110	1.15
WFSH20	2"	51	6.0	128	1.3
WFSHM60	Metric	60	5.0	150	1.75
WFSH25	2½"	63	4.5	158	1.8
WFSH30	3"	76	4.0	190	2.3
WFSHM80	Metric	80	3.0	320	2.5
WFSH35	3½"	90	3.0	360	2.9
WFSH40	4"	102	2.5	408	3.7
WFSH50	5"	127	2.0	508	4.7
WFSH60	6"	152	1.5	608	6.9

FFSH Springflex™ Sanitation

Key features

- Smooth outer for easy cleaning
- Odour resistant compound for sanitation uses
- Very high working pressures
- Very good for vacuum
- Exceptional kink and crush resistance from high tensile steel spiral
- Tough, very flexible and extremely durable
- Outstanding resistance to the effects of weather
- Minimum frictional loss is achieved by the smooth bore
- Excellent chemical resistance

Applications

Transportation of liquids & slurry within the marina, boat & caravan market places. This hose is resistant to most cleaning chemicals and detergents.

Construction

High tensile carbon steel wire encapsulated in white permeation resistant flexible PVC.

Colour
White.

Size Range
¾" to 4"
35mm to 80mm

Standard Length
Up to 5" 30 metres supplied in a coil.
Up to 80mm, 50 metre coils also available.
6" 20 metres supplied in a coil.
Other lengths available on request.

Temperature Range
-10°C to +55°C

PRODUCT REF.	INTERNAL DIA inch	INTERNAL DIA mm	WORKING PRESSURE BAR	MIN BENDING RADIUS mm	WEIGHT kg/Mtr
SFSH04	¾"	10	12.0	25	0.18
SFSH05	½"	13	12.0	26	0.21
SFSH06	¾"	16	10.5	32	0.25
SFSH07	¾"	19	9.0	45	0.33
SFSH10	1"	25	8.5	50	0.52
SFSH12	1¼"	32	8.0	80	0.66
SFSHM35	Metric	35	8.0	91	0.75
SFSH15	1½"	38	8.0	95	0.8
SFSHM45	Metric	45	8.0	110	1.15
SFSH20	2"	51	7.0	128	1.3
SFSHM60	Metric	60	6.0	150	1.75
SFSH25	2½"	63	5.5	158	1.8
SFSH30	3"	76	4.7	190	2.3
SFSHM80	Metric	80	3.5	320	2.5
SFSH35	3½"	90	3.5	360	2.9
SFSH40	4"	102	3.0	408	3.7
SFSH50	5"	127	2.5	508	4.7
SFSH40	4"	102	3.0	408	3.7

SFOR Springflex™ Oil Resistant

Key features

- Very high working pressures
- Very good for vacuum
- Exceptional kink and crush resistance from high tensile steel spiral
- Tough, very flexible and extremely durable
- Outstanding resistance to the effects of weather
- Minimum frictional loss is achieved by the smooth bore
- Excellent chemical and oil resistance

Applications

Fuel oils up to a 40% aromatic content including oil, diesel, kerosene, white spirit & mineral based hydraulic oils.

Construction

High tensile carbon steel wire & high tensile polyester fibres encapsulated in a black flexible oil resistant PVC nitrile cover, with a smooth inside wall.

Colour
Black.

Other colours are available subject to minimum order quantity.

Size Range
¾" to 6"
35mm to 80mm

Standard Length
Up to 5" 30 metres supplied in a coil.
Up to 80mm, 50 metre coils also available.
6" 20 metres supplied in a coil.
Other lengths available on request.

Temperature Range
-10°C to +55°C

PRODUCT REF.	INTERNAL DIA inch	INTERNAL DIA mm	WORKING PRESSURE BAR	MIN BENDING RADIUS mm	WEIGHT kg/Mtr
SFOR04	¾"	10	12.0	25	0.18
SFOR05	½"	13	12.0	26	0.21
SFOR06	¾"	16	10.5	32	0.25
SFOR07	¾"	19	9.0	45	0.33
SFOR10	1"	25	8.5	50	0.52
SFOR12	1¼"	32	8.0	80	0.66
SFORM35	Metric	35	8.0	91	0.75
SFOR15	1½"	38	8.0	95	0.8
SFORM45	Metric	45	8.0	110	1.15
SFOR20	2"	51	7.0	128	1.3
SFORM60	Metric	60	6.0	150	1.75
SFOR25	2½"	63	5.5	158	1.8
SFOR30	3"	76	4.7	190	2.3
SFORM80	Metric	80	3.5	320	2.5
SFOR35	3½"	90	3.5	360	2.9
SFOR40	4"	102	3.0	408	3.7
SFOR50	5"	127	2.5	508	4.7
SFOR60	6"	152	2.0	608	6.9

SFPUL Springflex™ PU Lined

Key features

- Increased wear resistance PU inner for transfer of abrasive materials
- Very high working pressures
- Very good for vacuum
- Exceptional kink and crush resistance from high tensile steel spiral
- Tough, very flexible and extremely durable
- Outstanding resistance to the effects of weather
- Minimum frictional loss is achieved by the smooth bore
- Excellent chemical resistance

Applications

Water, slurries, granules, foodstuffs and dilute chemicals. Springflex PU is ideally suited for applications in the agricultural, food processing, plastics handling, marine & construction industries.

Construction

High tensile carbon steel wire encapsulated in transparent non-toxic flexible PVC. Incorporating a Polyurethane inner liner. Smooth internal bore with smooth outer surface.

Colour
Standard - Transparent/Clear.

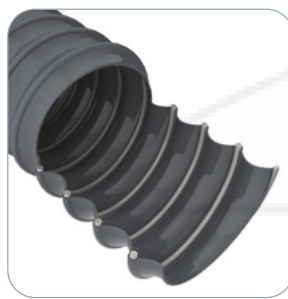
Other colours available subject to minimum order quantities.

Size Range
¾" & 4"

Standard Length
30 metre supplied in a coil.

Temperature Range
-10°C to +55°C

PRODUCT REF.	INTERNAL DIA inch	INTERNAL DIA mm	WORKING PRESSURE BAR	MIN BENDING RADIUS mm	WEIGHT kg/Mtr
SFPUL07	¾"	19.0	8	38	0.33
SFPUL10	1"	25.0	11	50	0.52
SFPUL12	1¼"	32.0	10	80	0.66
SFPUL15	1½"	38.0	10	95	0.80
SFPULM45	Metric	45.0	9	113	1.15
SFPUL20	2"	51.0	8	128	1.30
SFPULM60	Metric	60.0	6	150	1.75
SFPUL25	2½"	63.0	7	158	1.80
SFPUL30	3"	76.0	5	190	2.30
SFPUL35	3½"	89.0	5	225	2.90
SFPUL40	4"	102.0	5	255	3.70



Ducting Hose

Tubing and Braided Hose

VL Vacuflex Lightweight

Key features

- Tough, extremely flexible and durable for air ducting
- Excellent chemical resistance

Applications

VL ducting is suitable for the light duty extraction of fumes, air and dust. Also suitable for applications in the automotive industry.

Construction

Flexible PVC ducting reinforced with a PVC coated spring steel helix.

Colour

Standard - Black, Clear.

Size Range

1" to 4½"

Standard Length

10 metres supplied in a coil.

Temperature Range

-10°C to +55°C

PRODUCT REF.	INTERNAL DIA. inch	INTERNAL DIA. mm	VACUUM (m or H ₂ O)	MIN BENDING RADIUS mm	WEIGHT Kg/Mtr
VL10	1"	25	2	13	0.15
VL12	1½"	32	2	16	0.15
VL15	1½"	38	2	19	0.2
VL17	1¾"	45	1	23	0.25
VL20	2"	51	1	26	0.3
VL22	2¼"	57	1	29	0.32
VL25	2½"	63	1	32	0.35
VL27	2¾"	70	1	35	0.52
VL30	3"	76	1	38	0.6
VL32	3¼"	82	1	41	0.65
VL35	3½"	89	1	45	0.7
VL40	4"	102	1	51	0.75
VL45	4½"	115	1	58	0.8

VHW Vacuflex Heavy

Key features

- Tough, extremely flexible and durable for air ducting
- Excellent chemical resistance

Applications

VHW ducting is suitable for the extraction of fumes, air and dust. Also suitable for applications in the automotive industry.

Construction

Flexible PVC ducting reinforced with a PVC coated spring steel helix.

Colour

Standard - Grey.

Size Range

1" to 4½"

Standard Length

10 metres supplied in a coil.

Temperature Range

-10°C to +55°C

PRODUCT REF.	INTERNAL DIA. inch	INTERNAL DIA. mm	VACUUM (m or H ₂ O)	MIN BENDING RADIUS mm	WEIGHT Kg/Mtr
VHW10	1"	25	2	16	0.24
VHW12	1½"	32	2	19	0.3
VHW15	1½"	38	2	22	0.35
VHW17	1¾"	45	2	26	0.45
VHW20	2"	51	2	29	0.63
VHW22	2¼"	57	2	32	0.7
VHW25	2½"	63	1	35	0.78
VHW27	2¾"	70	1	38	0.86
VHW30	3"	76	1	41	1.04
VHW32	3¼"	82	1	44	1.12
VHW35	3½"	89	1	48	1.21
VHW40	4"	102	1	54	1.63
VHW45	4½"	115	1	61	1.4

MH Clear PVC

Key features

- FDA and EU 10-2011 approved compound for food contact
- Outstanding resistance to the effects of weather
- Minimum frictional loss is achieved by the smooth bore
- Excellent chemical resistance

Applications

MH tubing is extremely versatile and can be used in a wide range of low pressure applications including the transfer of liquids, acids, gases & foodstuffs.

Construction

Clear unreinforced flexible PVC.

Colour

Standard - Clear. Subject to minimum order quantity, colours & tints are available to order.

Size Range

½" & 2"

Standard Length

30 metres supplied in a coil. Subject to minimum order quantity, longer or shorter lengths are available to order.

Temperature Range

-10°C to +55°C

PRODUCT REF.	INTERNAL DIA. inch	INTERNAL DIA. mm	WORKING PRESSURE BAR	MIN BENDING RADIUS mm	WEIGHT Kg/Mtr
MH3/6	½"	3.0	-	24	0.03
MH4/6	¾"	4.0	-	32	0.02
MH5/8	13/64"	5.0	-	40	0.04
MH6/9	15/64"	6.0	-	48	0.04
MH6/12	15/64"	6.0	-	48	0.10
MH8/11	3/8"	8.0	-	64	0.06
MH8/14	5/8"	8.0	-	64	0.13
MH9/12	23/64"	9.0	-	72	0.06
MH10/13	25/64"	10.0	-	80	0.07
MH10/16	25/64"	10.0	-	80	0.15
MH12/15	15/32"	12.0	-	96	0.08
MH12/18	15/32"	12.0	-	96	0.17
MH13/19	33/64"	13.0	-	104	0.19
MH16/22	5/8"	16.0	-	128	0.22
MH19/25	55/64"	19.0	-	152	0.26
MH25/31	55/64"	25.0	-	200	0.32
MH32/38	1¼"	32.0	-	256	0.41
MH32/41	1¼"	32.0	-	256	0.63
MH38/47	1½"	38.0	-	304	0.74
MH45/54	1¾"	45.0	-	360	0.86
MH50/62	2"	50.0	-	400	1.30

BCH Black Contractor Hose

Key features

- Outstanding resistance to the effects of weather
- Minimum frictional loss is achieved by the smooth bore
- Excellent chemical resistance

Applications

BCH tubing is extremely versatile and can be used in a wide range of low pressure applications including the transfer of liquids, acids, gases & foodstuffs.

Construction

Black unreinforced flexible PVC.

Colour

Standard - Black. Subject to minimum order quantity, colours & tints are available to order.

Size Range

½" to 2"

Standard Length

30 metres supplied in a coil. Subject to minimum order quantity, longer or shorter lengths are available to order.

Temperature Range

-10°C to +55°C

PRODUCT REF.	INTERNAL DIA. inch	INTERNAL DIA. mm	WORKING PRESSURE BAR	MIN BENDING RADIUS mm	WEIGHT Kg/Mtr
BCH12/18	½"	12	18.5	96	0.17
BCH19/25	¾"	19	25.0	152	0.26
BCH25/31	1"	25	31.0	200	0.32

MHPU Clear Polyurethane Tubing

Key features

- Excellent abrasion resistance
- Outstanding resistance to the effects of weather
- Minimum frictional loss is achieved by the smooth bore
- Excellent chemical resistance

Applications

MHPU tubing is an extremely versatile and can be used in a wide range of low pressure applications including the transfer of fuels, oils, greases, liquids, acids, gases & foodstuffs.

Construction

Clear unreinforced flexible polyether Polyurethane.

Colour

Standard - Clear. Other colours available subject to minimum order quantity.

Size Range

½" - 1½"
Other sizes available subject to minimum order quantity

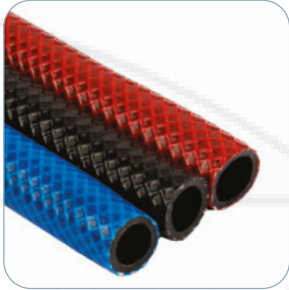
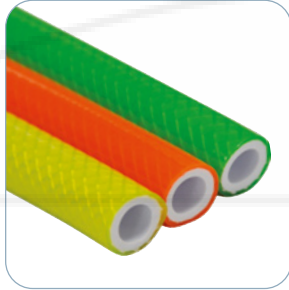
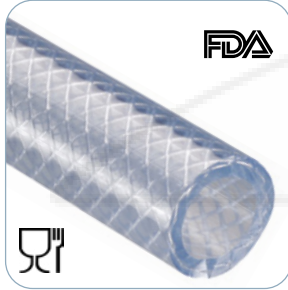
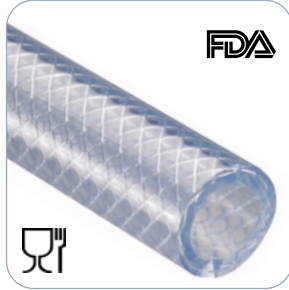
Standard Length

30m Coils
Other lengths available subject to minimum order quantity

Temperature Range

-25°C to +85°C

PRODUCT REF.	INTERNAL DIA. inch	INTERNAL DIA. mm	WORKING PRESSURE BAR	MIN BENDING RADIUS mm	WEIGHT Kg/Mtr
MHPU5/8	5/8"	5.0	-	40	0.04
MHPU6/9	1/4"	6.0	-	50	0.04
MHPU6/12	1/4"	6.0	-	50	0.10
MHPU8/11	3/8"	8.0	-	60	0.06
MHPU8/14	3/8"	8.0	-	60	0.13
MHPU9/12	Metric	9.0	-	70	0.06
MHPU10/13	3/8"	10.0	-	80	0.07
MHPU10/16	3/8"	10.0	-	80	0.15
MHPU12/15	1/2"	12.0	-	100	0.08
MHPU12/16	1/2"	12.0	-	100	0.11
MHPU12/18	1/2"	12.0	-	100	0.17
MHPU13/19	1/2"	13.0	-	100	0.19
MHPU16/22	5/8"	16.0	-	130	0.22
MHPU19/22	3/4"	19.0	-	150	0.12
MHPU19/25	3/4"	19.0	-	150	0.26



Tubing and Braided Hose

XL Lightweight Clear Braided PVC

Key features

- FDA and EU 10-2011 approved compound for food contact
- Lightweight version of HN for less arduous applications
- Outstanding resistance to the effects of weather
- Minimum frictional loss is achieved by the smooth bore
- Excellent chemical resistance

Applications

XL can be used to convey many liquids and gases under pressure. Applications include factory air lines, pneumatic equipment & general workshop use.

Construction

Two layers of clear flexible PVC bonded together encapsulating high tensile polyester fibres.

Colour

Standard - Clear.

Size Range

¼" & 2"

Standard Length

30 metres supplied in a coil. Subject to minimum order quantity, longer lengths are available to order.

Temperature Range

-10°C to +60°C

PRODUCT REF.	INTERNAL DIA inch	INTERNAL DIA mm	WORKING PRESSURE BAR	MIN BENDING RADIUS mm	WEIGHT Kg/Mtr
XL30	¼"	6.3	17.0	41	0.07
XL40	⅜"	8.0	15.0	52	0.08
XL45	⅜"	10.0	11.0	65	0.10
XL50	½"	12.5	10.0	81	0.14
XL70	⅝"	16.0	10.0	104	0.19
XL80	¾"	19.0	9.0	124	0.18
XL90	1"	25.0	9.0	163	0.35
XL100	1¼"	32.0	8.0	208	0.60
XL110	1½"	38.0	6.0	247	0.70
XL160	2"	50.0	6.0	325	1.13

HN Clear Braided PVC

Key features

- FDA and EU 10-2011 approved compound for food contact
- Outstanding resistance to the effects of weather
- Minimum frictional loss is achieved by the smooth bore
- Excellent chemical resistance

Applications

HN can be used to convey many liquids and gases under pressure. Applications include factory air lines, pneumatic equipment & general workshop use.

Construction

Two layers of clear flexible PVC bonded together encapsulating high tensile polyester fibres.

Colour

Standard - Clear. Other colours available subject to minimum order.

Size Range

⅜" to 2"

Standard Length

30 metres supplied in a coil. Subject to minimum order quantity, longer lengths are available to order.

Temperature Range

-10°C to +60°C

PRODUCT REF.	INTERNAL DIA inch	INTERNAL DIA mm	WORKING PRESSURE BAR	MIN BENDING RADIUS mm	WEIGHT Kg/Mtr
HN10	⅜"	5.0	25.0	32.5	0.08
HN30	¼"	6.3	22.0	41.0	0.09
HN40	⅝"	8.0	21.0	52.0	0.11
HN45	⅝"	10.0	20.0	65.0	0.15
HN50	½"	12.5	16.0	81.3	0.18
HN70	⅝"	16.0	15.0	104.0	0.28
HN80	¾"	19.0	15.0	123.5	0.30
HN90	1"	25.0	13.0	162.5	0.45
HN100	1¼"	32.0	8.0	208.0	0.72
HN110	1½"	38.0	8.0	247.0	0.88
HN160	2"	50.0	7.0	325.0	1.31

HHIVIS Hi Visibility Braided PVC

Key features

- Hi visibility colour for standing out
- Outstanding resistance to the effects of weather
- Minimum frictional loss is achieved by the smooth bore
- Excellent chemical resistance
- Hi Visibility colour for standing out and creating a safe awareness in your working environment

Applications

HN can be used to convey many liquids and gases under pressure. Applications include factory air lines, pneumatic equipment, general workshop use, garage forecourt, out door public events and window cleaning.

Construction

Two layers of flexible PVC bonded together encapsulating high tensile polyester fibres.

Colour

Standard - Hi Vis Yellow, Orange and Green. Other colours available subject to minimum order.

Size Range

⅜" to 2"

Standard Length

30 metres supplied in a coil. Subject to minimum order quantity, longer lengths are available to order.

Temperature Range

-10°C to +60°C

PRODUCT REF.	INTERNAL DIA inch	INTERNAL DIA mm	WORKING PRESSURE BAR	MIN BENDING RADIUS mm	WEIGHT Kg/Mtr
HHIVIZ10	⅜"	5.0	25	33	0.08
HHIVIZ30	¼"	6.3	22	41	0.09
HHIVIZ40	⅝"	8.0	21	52	0.11
HHIVIZ45	⅝"	10.0	20	65	0.15
HHIVIZ50	½"	12.5	16	81	0.18
HHIVIZ70	⅝"	16.0	15	104	0.28
HHIVIZ80	¾"	19.0	15	124	0.30
HHIVIZ90	1"	25.0	13	163	0.45
HHIVIZ100	1¼"	32.0	8	208	0.72
HHIVIZ110	1½"	38.0	8	247	0.88
HHIVIZ160	2"	50.0	7	325	1.31

BPU PU Braided

Key features

- Outstanding resistance to the effects of weather
- Minimum frictional loss is achieved by the smooth bore
- Excellent chemical resistance

Applications

BPU can be used to convey many liquids and gases under pressure. Applications include factory air lines, pneumatic equipment & general workshop use.

Construction

Two layers of clear flexible PU bonded together encapsulating high tensile polyester fibres.

Colour

Standard - Clear. Other colours available subject to minimum order quantity

Size Range

¼" to 2"

Other sizes available subject to minimum order quantity

Standard Length

30m Coils. Other lengths available subject to minimum order quantity

Temperature Range

-25°C to +85°C

PRODUCT REF.	INTERNAL DIA inch	INTERNAL DIA mm	WORKING PRESSURE BAR	MIN BENDING RADIUS mm	WEIGHT Kg/Mtr
BPU10	¼"	5.0	20	30	0.07
BPU30	¼"	6.3	20	30	0.09
BPU40	⅝"	8.0	20	50	0.10
BPU45	⅝"	10.0	20	70	0.15
BPU50	½"	12.5	16	80	0.16
BPU70	⅝"	16.0	15	100	0.26
BPU80	¾"	19.0	15	120	0.28

LAH Lightweight Air

Key features

- Kink and abrasion resistant ensuring long lasting use
- Outstanding resistance to the effects of weather
- Minimum frictional loss is achieved by the smooth bore
- Excellent chemical resistance

Applications

Ideally suited to applications such as hand held air tools where light weight & greater flexibility reduce operator fatigue.

Construction

Two lightweight layers of high quality PVC bonded together encapsulating high tensile polyester fibres.

Colour

Standard - Black, Blue or Red cover with Black liner. Other colours are available subject to minimum order.

Size Range

¼" to ¾"

Standard Length

30 metres supplied in a coil. Subject to minimum order quantity, longer lengths are available to order.

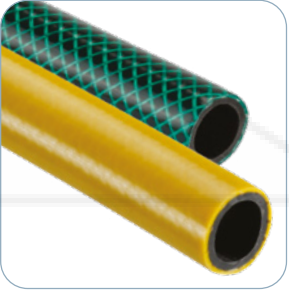
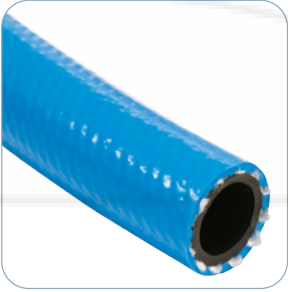
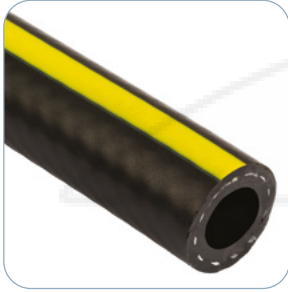
Temperature Range

-10°C to +60°C

PRODUCT REF.	INTERNAL DIA inch	INTERNAL DIA mm	WORKING PRESSURE BAR	MIN BENDING RADIUS mm	WEIGHT Kg/Mtr
LAH30	¼"	6.3	18	26.3	0.08
LAH40	⅝"	8.0	15	31.3	0.10
LAH45	⅝"	10.0	13	35.0	0.10
LAH50	½"	12.5	11	42.5	0.15
LAH70	⅝"	16.0	11	52.5	0.22
LAH80	¾"	19.0	11	60.0	0.23



NEW



Tubing and Braided Hose

LAHX Premium Light Weight Air

Key features

- Kink and abrasion resistant ensuring long lasting use
- Outstanding resistance to the effects of weather
- Minimum frictional loss is achieved by the smooth bore
- Excellent chemical resistance

Applications

Ideally suited to applications such as hand held air tools where light weight & greater flexibility reduce operator fatigue.

Construction

Two lightweight layers of high quality PVC bonded together encapsulating high tensile polyester fibres.

Colour

Standard - Black, Blue or Red Cover with Black Liner. Other colours available subject to minimum order quantity.

Size Range

1/8" to 3/4"

Standard Length

30m Coils. Other lengths available subject to minimum order quantity.

Temperature Range

-10°C to +60°C

PRODUCT REF.	INTERNAL DIA inch	INTERNAL DIA mm	WORKING PRESSURE BAR	MIN BENDING RADIUS mm	WEIGHT Kg/Mtr
LAHX10	1/8"	5.0	18	20	0.03
LAHX30	1/4"	6.3	16	30	0.03
LAHX40	3/8"	8.0	15	30	0.06
LAHX45	3/8"	10.0	13	40	0.08
LAHX50	1/2"	12.5	11	40	0.10
LAHX70	3/4"	16.0	11	50	0.13
LAHX80	3/4"	19.0	11	60	0.16

GPA General Purpose Air

Key features

- Tough, durable, excellent flexibility and kink resistance
- Outstanding resistance to the effects of weather
- Minimum frictional loss is achieved by the smooth bore
- Excellent chemical resistance
- Custom print on the strip subject to MOQ

Applications

The GPA range is ideally suited to compressed air applications in the industrial, construction & automotive sectors.

Construction

A high quality PVC core is bonded to a nitrile/PVC alloy cover encapsulating high tensile polyester fibres.

Colour

Standard - Black cover with Yellow stripe. Subject to minimum order quantity, other colours are available.

Size Range

3/16" to 1"

Standard Length

30 metres supplied in a coil Subject to minimum order quantity, longer lengths are available to order.

Temperature Range

-10°C to +60°C

PRODUCT REF.	INTERNAL DIA inch	INTERNAL DIA mm	WORKING PRESSURE BAR	MIN BENDING RADIUS mm	WEIGHT Kg/Mtr
GPA5/13	3/16"	5	20	85	0.17
GPA6/14	1/4"	6.3	20	91	0.19
GPA8/16	3/8"	8	20	104	0.23
GPA10/17	3/8"	10	20	117	0.27
GPA13/22	1/2"	12.5	20	143	0.40
GPA16/25	3/4"	16	20	163	0.45
GPA19/29	3/4"	19	20	189	0.61
GPA25/37	1"	25	20	241	0.93

CMP Compressor

Key features

- Tough, durable, abrasion resistant PVC, flexible and kink resistance
- 20 Bar working pressure
- Outstanding resistance to the effects of weather
- Minimum frictional loss is achieved by the smooth bore
- Excellent chemical resistance

Applications

Suitable for use in the construction & heavy engineering industries.

Construction

Two layers of PVC bonded together encapsulating high tensile polyester fibres.

Colour

Standard - Yellow Cover, Black Liner.

Size Range

1/4" & 1"

Standard Length

30 metres supplied in a coil. Also available in 15 metre assemblies.

Temperature Range

-10°C to +60°C

PRODUCT REF.	INTERNAL DIA inch	INTERNAL DIA mm	WORKING PRESSURE BAR	MIN BENDING RADIUS mm	WEIGHT Kg/Mtr
CMP6/12	1/4"	6.0	20.0	60.0	0.12
CMP8/15	3/8"	8.0	20.0	75.0	0.18
CMP10/17	3/8"	10.0	20.0	85.0	0.22
CMP12.5/19	1/2"	12.5	20.0	95.0	0.24
CMP19/29	3/4"	19.0	20.0	145.0	0.58
CMP25/36	1"	25.0	20.0	180.0	0.80

ASH 40 Bar Spray Hose

Key features

- 40 Bar working pressure
- Tough, flexible and extremely durable
- Outstanding resistance to the effects of weather
- Minimum frictional loss is achieved by the smooth bore
- Excellent chemical resistance

Applications

Insecticides, pesticides, gases, compressed air. Very popular for agricultural spray equipment.

Construction

Two layers of PVC bonded together encapsulating high tensile polyester fibres.

Colour

Standard - Blue outer, Black inner. Other colours are available subject to minimum order quantity.

Size Range

1/4" to 1"

Standard Length

50/100 metres supplied in a coil. Longer lengths available subject to minimum order quantity.

Temperature Range

-10°C to +60°C

PRODUCT REF.	INTERNAL DIA inch	INTERNAL DIA mm	WORKING PRESSURE BAR	MIN BENDING RADIUS mm	WEIGHT Kg/Mtr
ASH30BLU	3/8"	6.3	40	44	0.12
ASH40BLU	3/8"	8	40	56	0.15
ASHM9BLU	Metric	9	40	63	0.18
ASH45BLU	3/8"	10	40	70	0.19
ASHM12BLU	Metric	12	40	84	0.26
ASH50BLU	1/2"	12.5	40	95	0.30
ASH70BLU	3/8"	16	40	112	0.33
ASH80BLU	3/4"	19	40	145	0.44
ASH90BLU	1"	25	40	210	0.62

APWH All Purpose Water

Key features

- Outstanding low temperature characteristics combined with flexibility
- Outstanding resistance to the effects of weather
- Minimum frictional loss is achieved by the smooth bore
- Excellent chemical resistance

Applications

Suitable for general purpose water applications, including sports grounds, agricultural and horticultural applications.

Construction

Two layers of smooth PVC bonded together encapsulating high tensile polyester fibres.

Colour

Yellow or Translucent Green.

Size Range

1/2" & 1"

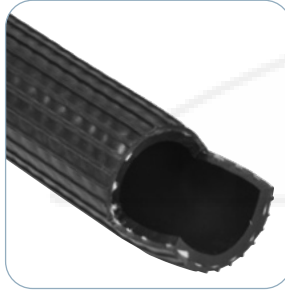
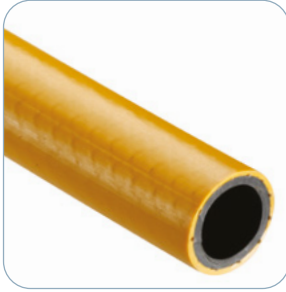
Standard Length

30 metres supplied in a coil.

Temperature Range

-10°C to +55°C

PRODUCT REF.	INTERNAL DIA inch	INTERNAL DIA mm	WORKING PRESSURE BAR	MIN BENDING RADIUS mm	WEIGHT Kg/Mtr
APWH12.5	1/2"	12.5	10.0	62.5	0.15
APWH19	3/4"	19.0	10.0	95.0	0.28
APWH25	1"	25.0	10.0	125.0	0.40



Tubing and Braided Hose

PWH Professional Water

Key features

- Excellent UV resistance by utilizing virgin materials which are Reach compliant
- Tough, flexible and extremely durable
- Outstanding resistance to the effects of weather
- Minimum frictional loss is achieved by the smooth bore
- Excellent chemical resistance

Applications

Suitable for all professional water applications including irrigation, wash down, water supply and delivery, for both agricultural and horticultural applications as well sport and leisure grounds.

Construction

Manufactured from two layers of smooth PVC bonded together encapsulating high tensile polyester yarns. Smooth internal bore with smooth outer surface.

Colour

Standard - Yellow outer with Black inner liner.

Size Range

½" to 1"

Standard Length

25 and 50 metre coils supplied as standard.

Temperature Range

-10°C to +60°C

PRODUCT REF.	INTERNAL DIA inch	INTERNAL DIA mm	WORKING PRESSURE BAR	MIN BENDING RADIUS mm	WEIGHT Kg/Mtr
PWH12.5	½"	12.5	10.0	62.5	0.17
PWH19	¾"	19.0	10.0	95.0	0.32
PWH25	1"	25.0	10.0	125.0	0.48

FLU Fluted Water Hose

Key features

- Outstanding resistance to the effects of weather
- Minimum frictional loss is achieved by the smooth bore
- Excellent chemical resistance

Applications

FLU tubing is extremely versatile and can be used in a wide range of low pressure applications including the transfer of liquids, acids, gases & foodstuffs.

Construction

Black unreinforced externally fluted flexible PVC.

Colour

Standard - Black. Subject to minimum order quantity, colours & tints are available to order.

Size Range

½" to 1"

Standard Length

30 metres supplied in a coil. Subject to minimum order quantity, longer or shorter lengths are available to order.

Temperature Range

-10°C to +55°C

PRODUCT REF.	INTERNAL DIA inch	INTERNAL DIA mm	WORKING PRESSURE BAR	MIN BENDING RADIUS mm	WEIGHT Kg/Mtr
FLU12.5	½"	12.5	10	64	0.17
FLU19	¾"	19	10	99	0.33
FLU25	1"	25	10	133	0.51

DDH Diesel Drop

Key features

- Tough, durable, excellent flexibility and kink resistance
- Outstanding resistance to the effects of weather
- Minimum frictional loss is achieved by the smooth bore
- Excellent chemical and oil resistance

Applications

Delivery of fuel oils with a low aromatic content including oil, diesel, kerosene, white spirit & mineral based hydraulic oils.

Construction

Two layers of nitrile PVC bonded together encapsulating high tensile polyester fibres.

Colour

Standard - Black with a Red stripe.

Size Range

¾" & 1"

Standard Length

50 metres supplied in a coil. Subject to minimum order quantity, longer lengths are available to order.

Temperature Range

-10°C to +55°C

PRODUCT REF.	INTERNAL DIA inch	INTERNAL DIA mm	WORKING PRESSURE BAR	MIN BENDING RADIUS mm	WEIGHT Kg/Mtr
DDH19/26	¾"	19	7	140	0.85
DDH25/34	1"	25	7	170	1.07

BDDH Bio Diesel Drop Hose

Key features

- Tough, durable, excellent flexibility and kink resistance
- Outstanding resistance to the effects of weather
- Minimum frictional loss is achieved by the smooth bore
- Excellent chemical and oil resistance

Applications

Suitable for the delivery of fuel oils with a low aromatic content including oil, diesel, bio-diesel, red diesel, kerosene, white spirit, adblue, urea and a wide range of mineral based hydraulic oils.

Construction

Two layers of nitrile PVC bonded together encapsulating high tensile polyester fibres.

Colour

Standard - Black complete with a distinctive Blue Stripe.

Size Range

¾" & 1"

Standard Length

50 metre supplied in a coil. Subject to minimum order quantity, longer lengths are available to order.

Temperature Range

-10°C to +55°C

PRODUCT REF.	INTERNAL DIA inch	INTERNAL DIA mm	WORKING PRESSURE BAR	MIN BENDING RADIUS mm	WEIGHT Kg/Mtr
BDDH19/26	¾"	19	7	140	0.85
BDDH25/34	1"	25	7	170	1.07

RFH PVC Fire

Key features

- Manufactured to comply with EN694
- Tough, durable, excellent flexibility and kink resistance
- Outstanding resistance to the effects of weather
- Minimum frictional loss is achieved by the smooth bore
- Excellent chemical and oil resistance

Applications

Suitable for use on fixed fire reel installations in public buildings and offices.

Construction

Two layers of nitrile PVC bonded together encapsulating high tensile polyester fibres.

Colour

Standard - Red Cover, Black Liner.

Size Range

¾" & 1"

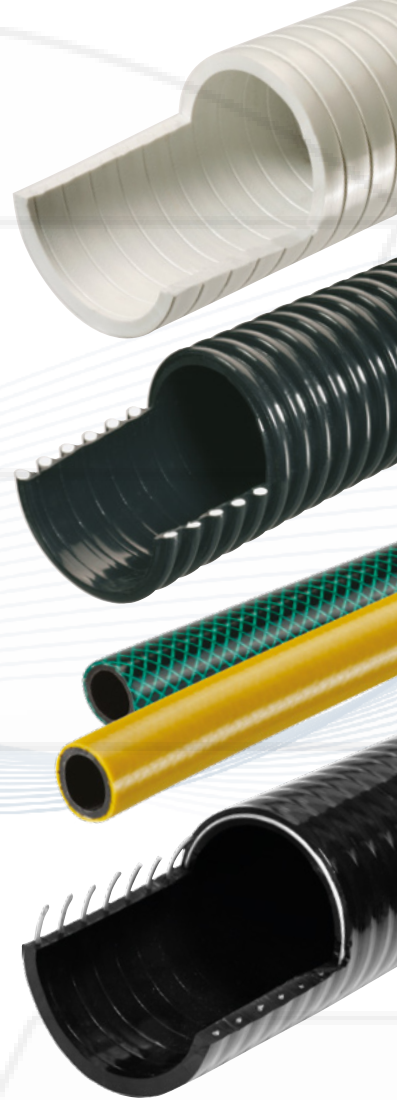
Standard Length

30 metres supplied in a coil. Subject to minimum order quantity, longer lengths are available to order.

Temperature Range

-10°C to +60°C

PRODUCT REF.	INTERNAL DIA inch	INTERNAL DIA mm	WORKING PRESSURE BAR	MIN BENDING RADIUS mm	WEIGHT Kg/Mtr
RFH19/26	¾"	19.0	12.0	130.0	0.38
RFH25/34	1"	25.0	12.0	170.0	0.63



quotes@tipes-co.uk

hose & ducting solutions

Tel: 01626 201092